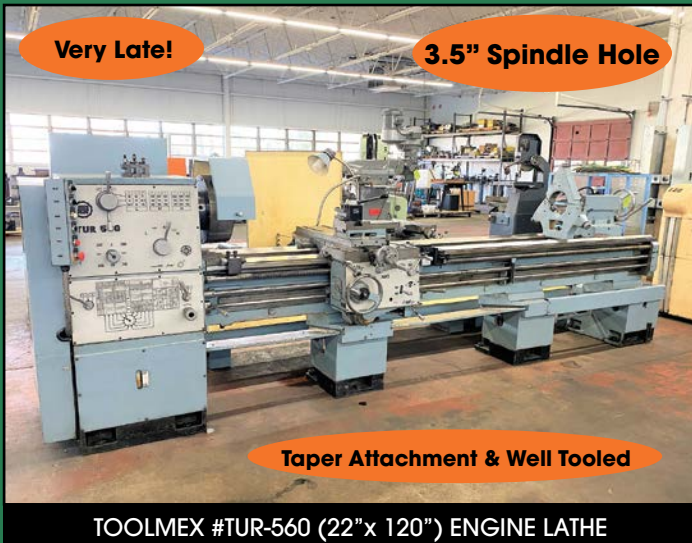
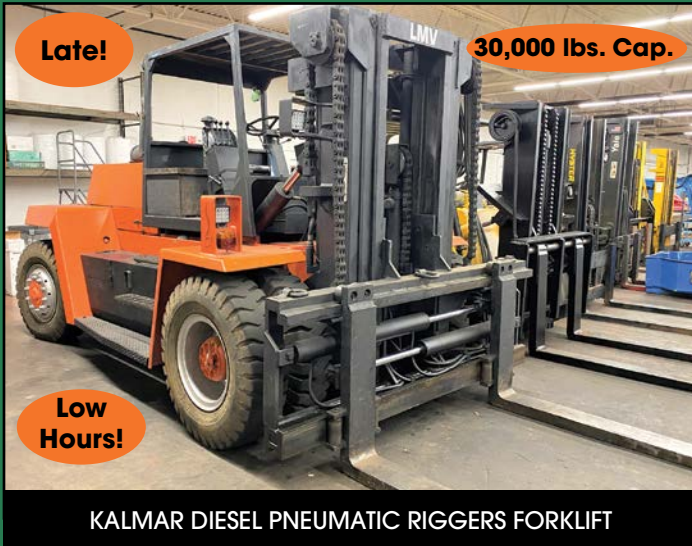


(2) (Very Late!) BRIDGEPORT 2HP VERTICAL MILLERS • OKUMA • HARDINGE • KITAMURA • AKEBONO •  
(8) KALMAR - HYSTER - CATERPILLAR - MITSUBISHI - YALE FORKLIFTS to 30,000 lbs. Cap. •  
(New 2008) GENIE #Z-34/22 ARTICULATING MANLIFT • HARDINGE HL-V-H LATHE • HARDINGE VERTICAL MILLER •  
TOOLMEX 22" X 120" ENGINE LATHE • LEBLOND ENGINE LATHE • HARDNESS TESTERS • TOOLING • PLANT SUPPORT & Much More!

400+  
LOTS

By Order of:  
**Ener-G Machinery, LLC**  
11 Skinner Street, East Hampton, Connecticut

400+  
LOTS



**SALE DATE: Wednesday, January 25th, 11:00 AM (ET)**  
**INSPECTION DATE: Tuesday, January 24th, (9:00 AM - 4:00 PM)**  
Tom DeCosmo, Jr. • (413) 530-0019 • tomjr@diauctions.com



# SALE DATE: WEDNESDAY, JANUARY 25TH , 11:00 AM (ET)



New 1990

Low Hours!

30,000 lbs. Cap.

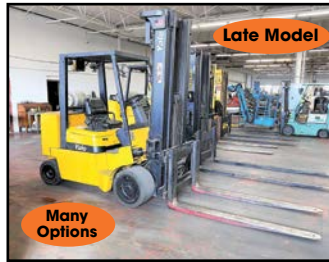
KALMAR DIESEL PNEUMATIC RIGGERS FORKLIFT



Low Hours!

PROPANE - Large Capacity

CATERPILLAR/TOWMOTOR #T-250 (25,000 lbs. Cap.) RIGGERS FORKLIFT



Late Model!

Many Options

YALE #GLC-120M (9,000 lbs. Cap.) PROPANE FORKLIFT



Rare!

New 1981

HYSTER #S-150A (15,000 lbs. Cap.) PROPANE FORKLIFT



New 2002

DRO

Rare!

Rare Optional - Full Electrical Cabinet

BRIDGEPORT 2HP "SERIES-I" (LEGEND) VERTICAL MILLER



Rare!

Well Tooled

LEBLOND REGAL (19"x 54") ENGINE LATHE



1 of 2

VIEW of OKUMA CADET CNC LATHE & BARFEED



3.5" Spindle Hole

Very Late!

Taper Attachment & Well Tooled

TOOLMEX #TUR-560 (22"x120") ENGINE LATHE



Threading

HARDINGE #HLV-H "PRECISION" TOOLROOM LATHE



Rare

PROPANE

Dual-Front Tires

ALLIS-CHALMERS #ACC-120 (12,000 lbs. Cap.) FORKLIFT



Excellent!

MITSUBISHI #FGC-15 (3,000 lbs. Cap.) FORKLIFT



More Plant Support Items Available

VIEW OF GOLF CARTS



Large Quantity!

VIEW of #CAT-40 CNC TOOLHOLDERS & HUOT CARTS



Many Available

VIEW of LISTA & VIDMAR TYPE TOOL CABINETS



Late!

KOHLER 24 HP

CUB CADET #RZTL ZERO-TURN LAWNMOWER



Several Available

VIEW OF CNC BARFEED SYSTEMS



Large Quantity!

VIEW of WILSON-ROCKWELL HARDNESS TESTERS



SUNNEN TOOLING Available

VIEW of RACK SHELVING



Large Quantity!

VIEW of FANUC CNC COMPONENTS



VIEW of RAW MATERIAL & RACKS

VIEW OF RAW MATERIAL & RACKS



**INSPECTION DATE: TUESDAY, JANUARY 24TH, (9:00 AM - 4:00 PM)**



**HARDINGE #HVM VERTICAL MILLING MACHINE**



**DoALL #1613-3 VERTICAL BAND SAW**



**BRIDGEPORT 2HP "SERIES-I" VERTICAL MILLER**



**VIEW of LISTA-VIDMAR TYPE CABINETS**



**AKEBONO #MINC-35XLT CNC "Gang-Type" LATHE**

**NOTICE:**  
Some Machine Accessories & Fixtures in Photos may be SOLD separately. Please Inspect or View Final Lot Catalog for confirmation.

**TURN YOUR SURPLUS MACHINERY TO \$\$\$**  
Call or Email Today to Consign Items in our next Consignment Auction!  
Contact: Tom DeCosmo, Jr.  
Email: tomjr@diauctions.com Phone: 413-530-0019

**UPCOMING "DI-AUCTIONS"**  
**\* MAJOR CONSIGNMENT AUCTION - FEBRUARY 8TH**  
**\* CHECK OUR WEBSITE FOR OTHER UPCOMING DI-AUCTIONS - 2023**  
**WWW.DIAUCTIONS.COM**

**\*SEE ALL AUCTION INFORMATION AT - [www.diauctions.com](http://www.diauctions.com)**

# ONLINE AUCTION

By Order of:

## ENER-G MACHINERY, LLC

11 Skinner Street  
East Hampton, Connecticut

## SALE DATE:

Wednesday, January 25th , 11:00 AM (ET)

**Inspection Date:**

Tuesday, January 24th, (9:00 AM - 4:00 PM)

**Buyer's Premium: 18%**

**Payment Due In Full:**

FRIDAY, JANUARY 27th, 2023

**Removal:** ALL ITEMS MUST BE REMOVED BY

FRIDAY, FEBRUARY 3rd, 2023.

(\*NO EXCEPTIONS TO THIS REMOVAL DATE)

### TECHNICAL INFORMATION & INSPECTIONS:

Tom DeCosmo, Jr. (413) 530-0019  
or Email: tomjr@diauctions.com

### DI AUCTIONS - ABBREVIATED AUCTION TERMS & CONDITIONS

YOUR PARTICIPATION AND BIDDING ARE CONSIDERED A LEGALLY BINDING CONTRACT - IT IS PROHIBITED TO BID ON ANY ITEM THAT YOU CANNOT PAY FOR IN FULL BY THE SPECIFIED DATE OR REMOVE BY DESIGNATED DATE.

Subject to amendments and modifications announced by the auctioneer at the time of the auction, any person participating in the auction shall be bound by the following terms and conditions. The auctioneer does not warrant the accuracy, authenticity, description, weight, count or measure of any listings or photos of items sold, specified herein.

All items will be sold to the highest bidder conforming to the bid process in accordance to the AUCTIONEER'S TERMS & CONDITIONS - COMPLETE COPIES AVAILABLE AT [WWW.DIAUCTIONS.COM](http://WWW.DIAUCTIONS.COM). No items shall be removed unless paid in full and all items purchased shall be removed in the time allocated by the auctioneer. No item, no matter how small or how far the purchaser must travel, may be removed until the close of the auction sale.

All payments shall be by way of cash, certified check, wire transfer or a company check accompanied by a bank letter of guarantee payable to DI Auctions. All bidding and invoicing will be in US Dollars (\$ FUNDS). All bidders are responsible for all applicable taxes. Rigging/Removal of sold equipment is the sole responsibility of the buyer and must be completed by the designated auction removal date. Rigging/Removal may not begin until payment has been made in full and the auction sale is complete. All rigging will require a certificate of insurance of a minimum \$1,000,000.00 naming DI Auctions, Seller and owner of the real estate where the auction is conducted as the insureds.

ALL SALES ARE FINAL, Items are Sold "AS IS - WHERE IS," "IN PLACE," "WITH ALL FAULTS" BASIS. A Buyer's Premium will apply to all online purchases for this Auction.

REGISTRATION & BIDDING ONLINE: If you plan to bid online. The pre-approval process is easy, go to [WWW.DIAUCTIONS.COM](http://WWW.DIAUCTIONS.COM) and register. DI Auctions must verify all bidder information and bidder must confirm agreement to the all Terms and Conditions. ANYONE OUTSIDE OF THE CONTINENTAL UNITED STATES WILL BE REQUIRED TO WIRE TRANSFER PRIOR TO THE AUCTION DATE A MINIMUM DEPOSIT OF \$5,000.00 TO BE APPROVED FOR ALL ONLINE BIDDING.

(DI Auctions - \* A Trade-Name of Thomas Industrial Machinery Co.,Inc. , a MA. Corp.)

**Thomas J. DeCosmo, Auctioneer • MA. License # AU-2665**



**DI | DECOSMO INDUSTRIAL AUCTIONS**

P.O. Box 569 Agawam, MA 01001

### PAYMENT INFORMATION:

Tom DeCosmo, Jr. (413) 530-0019

**LARGE QUANTITY of INSPECTION ITEMS and PLANT SUPPORT ITEMS!!**



**DI | DECOSMO INDUSTRIAL AUCTIONS**  
 P.O. Box 569 Agawam, MA 01001  
 (413) 530-0019  
 www.DIAUCTIONS.com

PRSR STD  
 U.S. Postage  
**PAID**  
 Permit No. 458  
 Spfld, MA

# ONLINE AUCTION

By Order of:

## Ener-G Machinery, LLC

11 Skinner Street  
 East Hampton, Connecticut

### SALE DATE:

Wednesday, January 25th , 11:00 AM (ET)

### INSPECTION DATE:

Tuesday, January 24th, (9:00 AM - 4:00 PM)

(2) (Very Late!) BRIDGEPORT 2HP VERTICAL MILLERS • OKUMA • HARDINGE • KITAMURA • AKEBONO •  
 (8) KALMAR - HYSTER -CATERPILLAR - MITSUBISHI - YALE FORKLIFTS to 30,000 lbs. Cap. •  
 (New 2008) GENIE #Z-34/22 ARTICULATING MANLIFT • HARDINGE HLV-H LATHE • HARDINGE VERTICAL MILLER •  
 TOOLMEX 22" X 120" ENGINE LATHE • LEBLOND ENGINE LATHE • HARDNESS TESTERS • TOOLING • PLANT SUPPORT & Much More!

By Order of:

## Ener-G Machinery, LLC

11 Skinner Street, East Hampton, Connecticut

**SALE DATE: Wednesday, January 25th , 11:00 AM (ET)**

**Inspection Date: Tuesday, January 24th, (9:00 AM - 4:00 PM)**



ACRA-TURN #13x40  
 (13"x 40") ENGINE LATHE



HARDINGE #CONQUEST  
 T-42SP CNC LATHE



KITAMURA #MyCenter-3Xi  
 "SPARKCHANGER"  
 CNC VERTICAL  
 MACHINING CENTER



OKUMA #MX-45VBE  
 CNC VERTICAL  
 MACHINING CENTER



BRIDGEPORT 2 HP "LEGEND"  
 SERIES-I VERTICAL MILLER