

TSUGAMI • DOOSAN • HAAS • OKUMA • HARDINGE • BROTHER - CNC MILLING & TURNING MACHINES • WICKMAN MULTI-SPINDLE SCREW MACHINES • WICKMAN TOOLING • BARRETT CHIP SPINNERS • TOYOTA FORKLIFTS • SHOP VEHICLES • (2) MAGNUS PARTS CLEANING LINES • GORBEL MODULAR CRANES • TOOLROOM • AIR COMPRESSORS • INSPECTION • PLANT SUPPORT • OFFICE FURNITURE & Much More!

600+
LOTS

Allied Machined Products Corporation

4 Westec Drive, Auburn, Massachusetts

600+
LOTS

By Order of:



New
2014

Rare!

Chip Conveyor

DOOSAN #PUMA-2600L CNC TURNING CENTER



Excellent

New
2011

High-Speed
Machining

HAAS #VF-2SS CNC VERTICAL MACHINING CENTER



New
2016

Barfeed-System
Included

TSUGAMI #MO-8SY CNC "SWISS-TYPE" SCREW MACHINE



Rare & Excellent!

New
2016

BROTHER #SPEEDIO-S1000X1 CNC TURRET-TYPE
"HIGH-TORQUE" MILLING & DRILLING CENTER

SALE DATE: WEDNESDAY, FEBRUARY 28TH, 10:00 AM (ET)

INSPECTION: Tuesday, February 27th, (9:00 AM - 4:00 PM)

Tom DeCosmo, Jr. • (413) 530-0019 • tomjr@diauctions.com

Sale under Management of:

DeCosmo Industrial Auctions

P.O. Box 569, Agawam, MA 01001

www.DIAUCTIONS.com

Thomas DeCosmo, Auctioneer • MA. License # AU-2665



Auctioneers & Appraisers Since 1982



Auctioneers & Appraisers Since 1982

OUTSTANDING OFFERING OF CNC MACHINERY • TOOLROOM • PLANT SUPPORT, MACHINE TOOL ACCESSORIES & More!



DOOSAN #LYNX-220 CNC TURNING CENTER



HAAS #SL-10 CNC TURNING CENTER



TSUGAMI #SS-32 CNC "SWISS-TYPE" SCREW MACHINE



TSUGAMI #S-25 CNC "SUPER SWISS-TURN" SCREW MACHINE



MIYANO #BND-42Ts CNC TURNING CENTER



TSUGAMI #BS-19-III CNC "SWISS-TYPE" SCREW MACHINE



HAAS #GT-10 CNC LATHE



OKUMA #GENOS-L300-M CNC "MILL-TURN" CENTER



HAAS #SL-30 CNC TURNING CENTER



HARDINGE #COBRA-42 CNC LATHE



OKUMA #CROWN-L1060 CNC LATHE



HAAS #SL-20 CNC TURNING CENTER



Wired 4-Axis

New 2012

HARDINGE #GX-1000-OSP CNC VERTICAL MACHINING CENTER



Excellent!

Large Quantity of Tooling!

VIEW OF HARDINGE LATHES (Chucker, HSL & DV-59 AVAILABLE)



Rare!

HARDINGE #DV-59 SECONDARY LATHE w/ AIR-CROSS-SLIDE



1 of 5

WICKMAN TOOLING & GEARS AVAILABLE

WICKMAN #626-1 "MULTI-SPINDLE" SCREW MACHINE



New 1997

Excellent!

HARRISON #M-390 (16"x 50") ENGINE LATHE



New 2014

Super Clean!

HARDINGE "4th-AXIS" ROTARY TABLE



Late - Including (1) KURT Pneumatic Vise

20-Available

VIEW OF KURT PRECISION MACHINE VISES

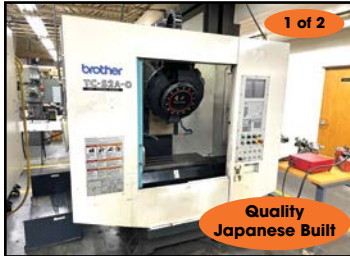


Rare!

As New As 2011

Large Quantity #CAT-40 & #BT-30 Tooling To Be SOLD

VIEW OF HAAS #HA-5C CNC INDEXERS



1 of 2

Quality Japanese Built

BROTHER #TC-S2A-O CNC TURRET-TYPE MILLING CENTER



1 of 2

GORBEL 2-Ton MODULAR CRANE SYSTEM



Late!

Rare!

ROYAL #ROTA-RACK PARTS ACCUMULATOR



Many w/ Contents

VIEW OF VIDMAR H.D. TOOL CABINETS

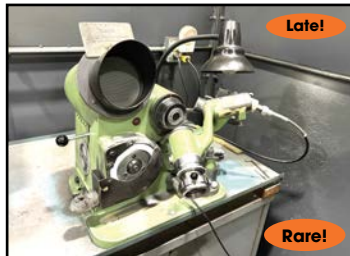


Rare!

New 2006

Excellent!

DAREX #XPS-16 CNC DRILL GRINDER



Late!

Rare!

OPTIMA 1" PRECISION DRILL GRINDER



2 - Available

Late!

VIEW OF BARRETT #1100 CHIP SPINNERS



Late!

Excellent!

CECOR COOLANT/OIL PORTABLE SUMP SUCKER



DRO

Rare!

Edge-Finder

MICRO-VU #SPECTRA 16" OPTICAL COMPARATOR



High Speed Machining

New 2004

HAAS #VF-2 CNC VERTICAL MACHINING CENTER



Many Plant Support Items to Be Sold

DAKE 25-Ton HYD. SHOP PRESS



Late!

Rare!

BARRETT #CLARIFUGE-125-F CENTRIFUGE



Late!

SKYJACK "SCISSOR-TYPE" MANLIFT

• TREMENDOUS OFFERING OF LATE MODEL - CNC MACHINING EQUIPMENT & INSPECTION •
 • PLEASE INSPECT ONSITE OR SEE THE ONLINE LOT CATALOG •



Late!

Rare!

TOYOTA LPG FORKLIFT
w/ BOOM-LIFT ATTACHMENT



New 2008

Up to 40HP

1 of 3

VIEW OF SULLIVAN #PALATEK
AIR COMPRESSORS



New 2017

Excellent!

STARRETT #AV-300 VISION-TYPE
MEASURING SYSTEM



2 of 3

VIEW OF TESA MICRO-HITE DIGITAL
HITE GAGES



New 2012

Rare!

Low Mileage &
Title In Hand

TOYOTA TUNDRA PICK-UP TRUCK



New 2022

VIEW OF VENDING MACHINES



1 of 2

Stainless Steel

VIEW OF MAGNUS PARTS
WASHING SYSTEM



Raw Material
To be SOLD

VIEW OF H.D. CANTILEVER
MATERIAL RACKS



Late!

1 of 2

ZEKS REFRIGERATED AIR DRYER



New 2013

Low Mileage &
Title In Hand

VIEW OF CHRYSLER RAM
SHOP VAN



CENTERLESS GRINDERS
also AVAILABLE

VIEW OF SURFACE GRINDERS



Many Available!

VIEW OF BARRETT CHIP
SPINNER BUCKETS



Large Quantity
to be SOLD!

VIEW OF H.D. PART TOTES



Large Quantity
to be SOLD!

VIEW OF H.D. STEEL CORRUGATED
STORAGE TUBS



Clean!

VIEW OF H.D. PALLET RACKING



Late!

HEM #H-90A "AUTOMATIC"
BAND SAW



Large Quantity
Available!

VIEW OF INSPECTION ITEMS



REED THREADING HEADS
ALSO AVAILABLE

VIEW OF REED
THREAD-ROLLING DIES



New 2022

1 of 3

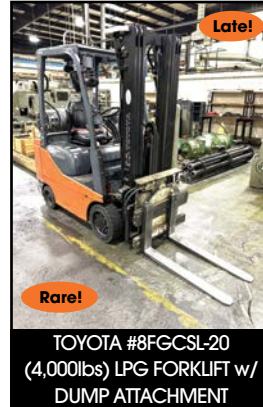
KONICA-MINOLTA #bizhub-300i
"MULTI-FUNCTION" COPIER



Large Quantity
to be SOLD!

VIEW OF MACHINE PARTS &
PLANT SUPPORT ITEMS

INSPECTION: Tuesday, February 27th, (9:00 AM - 4:00 PM)



NOTICE:

Some Machine Accessories & Fixtures in Photos may be SOLD separately. Please Inspect or View Final Lot Catalog for confirmation.

TURN YOUR SURPLUS MACHINERY TO \$\$\$

Call or Email Today to Consign Items in our next Consignment Auction!

Contact: Tom DeCosmo, Jr.

Email: tomjr@diauctions.com Phone: 413-530-0019



SMW-AUTOBLOK #AXN-254 HYD. "AUTO-INDEXING" CHUCKING SYSTEM

FOR FULL AUCTION TERMS & INFORMATION GO TO: www.DIAUCTIONS.com

ONLINE ONLY AUCTION

By Order of:

Allied Machined Products Corporation

4 Westec Drive

Auburn, Massachusetts

SALE DATE:

Wednesday, February 28th, 10:00 AM (ET)

INSPECTION:

Tuesday, February 27th, (9:00 AM - 4:00 PM)

Buyer's Premium: 18%

Payment Due In Full:

FRIDAY, MARCH 1st, 2024

REMOVAL:

ALL ITEMS MUST BE REMOVED BY

FRIDAY, MARCH 8th, 2024

(*NO EXCEPTIONS TO THIS REMOVAL DATE)

DI AUCTIONS - ABBREVIATED AUCTION TERMS & CONDITIONS

YOUR PARTICIPATION AND BIDDING ARE CONSIDERED A LEGALLY BINDING CONTRACT - IT IS PROHIBITED TO BID ON ANY ITEM THAT YOU CANNOT PAY FOR IN FULL BY THE SPECIFIED DATE OR REMOVE BY DESIGNATED DATE.

Subject to amendments and modifications announced by the auctioneer at the time of the auction, any person participating in the auction shall be bound by the following terms and conditions. The auctioneer does not warrant the accuracy, authenticity, description, weight, count or measure of any listings or photos of items sold, specified herein.

All items will be sold to the highest bidder conforming to the bid process in accordance to the AUCTIONEER'S TERMS & CONDITIONS - COMPLETE COPIES AVAILABLE AT WWW.DIAUCTIONS.COM. No items shall be removed unless paid in full and all items purchased shall be removed in the time allocated by the auctioneer. No item, no matter how small or how far the purchaser must travel, may be removed until the close of the auction sale.

All payments shall be by way of cash, certified check, wire transfer or a company check accompanied by a bank letter of guarantee payable to DI Auctions. All bidding and invoicing will be in US Dollars (\$ FUNDS). All bidders are responsible for all applicable taxes. Rigging/Removal of sold equipment is the sole responsibility of the buyer and must be completed by the designated auction removal date. Rigging/Removal may not begin until payment has been made in full and the auction sale is complete.

ALL SALES ARE FINAL, Items are Sold "AS IS - WHERE IS," "IN PLACE," "WITH ALL FAULTS" BASIS. A 18% Buyer's Premium will apply to all online purchases for this Auction.

REGISTRATION & BIDDING ONLINE: If you plan to bid online. The pre-approval process is easy, go to www.DIAUCTIONS.com and register. DI Auctions must verify all bidder information and bidder must confirm agreement to the all Terms and Conditions. ANYONE OUTSIDE OF THE CONTINENTAL UNITED STATES WILL BE REQUIRED TO WIRE TRANSFER PRIOR TO THE AUCTION DATE A MINIMUM DEPOSIT OF \$5,000.00 TO BE APPROVED FOR ALL ONLINE BIDDING.

(DI Auctions - * A Trade-Name of Thomas Industrial Machinery Co., Inc., a MA. Corp.)



DI | DECOSMO INDUSTRIAL AUCTIONS

P.O. Box 569 Agawam, MA 01001

PAYMENT INFORMATION: Tom DeCosmo, Jr. (413) 530-0019

TECHNICAL INFORMATION :

Tom DeCosmo, Jr. (413) 530-0019 or Email: tomjr@diauctions.com

Thomas DeCosmo, Auctioneer • MA. License # AU-2665

ONLINE AUCTION ONLY - REGISTER & BID at WWW.DIAUCTIONS.COM

5



DI | DECOSMO INDUSTRIAL AUCTIONS
 P.O. Box 569 Agawam, MA 01001
 (413) 530-0019
 www.DIAUCTIONS.com

PRSR STD
 U.S. Postage
PAID
 Permit No. 458
 Spfld, MA

ONLINE ONLY AUCTION

By Order of:

Allied Machined Products Corporation

4 Westec Drive

Auburn, Massachusetts

AUCTION DATE:

Wednesday, February 28th, 10:00 AM (ET)

INSPECTION:

Tuesday, February 27th, (9:00 AM - 4:00 PM)

TSUGAMI • DOOSAN • HAAS • OKUMA • HARDINGE • BROTHER - CNC MILLING & TURNING MACHINES • WICKMAN MULTI-SPINDLE SCREW MACHINES • WICKMAN TOOLING • BARRETT CHIP SPINNERS • TOYOTA FORKLIFTS • SHOP VEHICLES • (2) MAGNUS PARTS CLEANING LINES • GORBEL MODULAR CRANES • TOOLROOM • AIR COMPRESSORS • INSPECTION • PLANT SUPPORT • OFFICE FURNITURE & Much More!

By Order of:

Allied Machined Products Corporation

4 Westec Drive, Auburn, Massachusetts

SALE DATE: Wednesday, February 28th, 10:00 AM (ET)

INSPECTION: Tuesday, February 27th, (9:00 AM - 4:00 PM)



New 2017
TOYOTA #9BRU18 (3,500lbs) REACH FORK-TRUCK
 Very Rare!



New 2013
 Rare!
OKUMA #GENOS-L300-M CNC "MILL-TURN" CENTER
 Barfeed-System Included



Rare!
 New 2013
TSUGAMI #SS-32 CNC "SWISS-TYPE" SCREW MACHINE
 Barfeed-System Included



Mint!
BRIDGEPORT 2HP "SERIES-I" MILLING MACHINE



New 2011
HAAS #VF-2SS CNC VERTICAL MACHINING CENTER
 High-Speed Machining